

# COOPERATIVE CONNECTIONS

## Hurricane Aid

**Linemen Help  
Restore Power After  
Hurricane Helene**  
Pages 8-9

**First Responders**  
Pages 12-13



## GENERAL MANAGER'S COLUMN

31321 SD Hwy. 19  
PO Box 317  
Vermillion, SD 57069  
[www.clayunionelectric.coop](http://www.clayunionelectric.coop)



605-624-2673  
800-696-2832  
605-624-5526 (fax)  
[Like us on Facebook](#)

A Touchstone Energy® Cooperative 

Dear Clay-Union Member,

November 1, 2024

Starting January 1, 2025, our members will see an increase in electric rates due to higher costs from our power providers, East River and Basin Electric, and rising expenses to maintain safe, reliable power.

After reviewing detailed forecasts and industry changes, our Board of Directors has approved a rate increase for the first time since May 2017. Members will see a change in the facility charge and adjustments to some energy blocks. The facility charge is a monthly charge that ensures reliable service for all members regardless of energy usage. This fee covers essential costs, including:

- Trucks, transformers, power poles, and labor for our distribution system
- System improvements to increase capacity and reliability
- New technologies, such as advanced metering, for better service
- Liability insurance, interest, and taxes

This chart summarizes the changes that will be effective on January 1, 2025.

Residential/ Single Phase	Before 1/1/2025	After 1/1/2025	Change	
Facility Charge	\$35.00	\$50.00	\$15.00	per month
1st 1200 KWH's	\$0.1100	\$0.1100	\$0.0000	per KWH
Over 1200 KWH's	\$0.0775	\$0.0900	\$0.0125	per KWH
<i>The average residential member uses 1,300 KWH's per month which will be an increase of \$17.50 per month</i>				
Small Commercial	Before 1/1/2025	After 1/1/2025	Change	
Three Phase				
Facility Charge	\$65.00	\$75.00	\$10.00	per month
1st 1800 KWH's	\$0.1100	\$0.1100	\$0.0000	per KWH
Over 1800 KWH's	\$0.0820	\$0.0900	\$0.0080	per KWH
Irrigation	Before 1/1/2025	After 1/1/2025	Change	
Annual Minimum	\$30.00	\$32.00	\$2.00	per avg KW/season
1st Rate Block	\$0.1010	\$0.0590	-\$0.0420	per KWH
Excess over 1st rate block	\$0.0450	\$0.0590	\$0.0140	per KWH
Large Power	Before 1/1/2025	After 1/1/2025	Change	
Facility Charge	\$100.00	\$125.00	\$25.00	per month
1st Rate Block	\$0.0790	\$0.0590	-\$0.0200	per KWH
2nd Rate Block	\$0.0430	\$0.0590	\$0.0160	per KWH
Demand KW	\$19.00	\$21.00	\$2.00	per KW
Campground & Multi Residential	Before 1/1/2025	After 1/1/2025	Change	
Facility Charge	\$50.00	\$50.00	\$0.00	per month
1st Rate Block	\$0.0700	\$0.0700	\$0.0000	per KWH
Demand KW	\$19.00	\$21.00	\$2.00	per KW

We understand that rate increases are difficult, and we are committed to keeping costs as low possible while providing safe, dependable power.

The Board of Directors and Management

## COOPERATIVE CONNECTIONS

### CLAY-UNION ELECTRIC SPARKS

(USPS 116-800)

Office Hours  
Monday through Friday  
7:30 a.m. to 4:00 p.m.  
31321 SD Hwy. 19, Vermillion, S.D.

#### Board of Directors

Tom Larsen, President  
Christopher Kinney, Vice President  
Mike Slattery, Treasurer  
James Ryken, Secretary  
Sara Schulte, Asst. Secretary

#### Staff

Chris Larson, General Manager  
Beth Bottolfson, Manager of Finance  
& Administration  
Mike Kruse, Operations Manager  
Lori Rueb, Senior Billing Coordinator  
Penny Ascherman,  
Member Services Specialist  
Jackie Williams,  
Marketing/Communications  
Electrician Foreman - Vacant  
Josh Anthofer, Electrician  
Alan Gauer, Crew Foreman  
Curt Johnson, Lead Lineman  
Nick Buckman, Journeyman Lineman  
Travis Wells, Journeyman Lineman  
Casey Ihnen, Journeyman Lineman  
Quinn Springer, Lead Lineman  
Jake Husby, Journeyman Lineman  
Clayton Sorensen, Apprentice Lineman

#### POWER FAILURE – 24-hour service In case of Power Failure Call: 1-800-696-2832 or 624-2673

CLAY-UNION ELECTRIC SPARKS is published monthly by Clay-Union Electric Corporation, P.O. Box 317, 31321 SD Hwy. 19, Vermillion, SD 57069. Periodicals Postage Paid at Vermillion, S.D., and additional offices. Clay-Union Electric members devote approximately 50 cents a month from their electric payments for a subscription to this publication. Subscriptions for non-members are available for \$12 annually.

POSTMASTER: Send address changes to Clay-Union Electric Sparks, PO Box 317, Vermillion, SD 57069; Telephone (605) 624-2673, 1-800-696-2832 Fax (605) 624-5526.

*This institution is an equal opportunity provider and employer*



We're thankful for the gift of your membership! The members are at the heart of everything we do, and we're grateful for the opportunity to power your holiday season.

*Happy  
Holidays*

we wish you joy  
Our office will be closed  
Tuesday and Wednesday,  
December 24 & 25 and  
January 1, 2025.  
***Our 24/7 on-call service will be  
assisting with any emergency calls.***

## Outage Reports

Date	Time	Township	Members	Cause
10/3	9:30 a.m.	Star	31	Animal
10/12	7:00 p.m.	Spink	1	Member Caused
10/21	2:00 a.m.	Mission Hill	90	Underground Fault
10/29	3:00 p.m.	Riverside	8	Member Caused
10/31	4:15 p.m.	Glenwood	204	Accident on I29

## YEAR-TO-DATE FINANCIALS

	Sept. 2024	Year To Date
Number of Consumers.....	3,901	3,893 Avg.
Total Revenue .....	\$652,973	\$6,716,712
Total Cost of Service.....	\$795,196	\$7,359,888
Operating Margins .....	\$(142,223)	\$(643,176)
Other Margins .....	\$13,036	\$676,840
Total Net Margins .....	\$(129,187)	\$33,664
kWh Purchased .....	6,362,051	62,504,124
Cost of Power .....	\$402,077	\$3,911,969
kWh Sales .....	6,092,939	59,388,254
Residential Average Usage .....	1,070	1,272
Residential Average Monthly Bill.....	\$139	\$153

# ENJOY A SAFE HOLIDAY SEASON

From late November to mid-January, when families gather, parties are scheduled and travel spikes, safety should be top of mind. Following is tried-and-true advice to ensure your family remains safe and injury-free throughout the season.

### Traveling for the Holidays? Be Prepared

If you're traveling this year, be sure your vehicle is in good running condition, get plenty of rest and be prepared for any emergency. Traveling by car during the holidays has the highest fatality rate of any major form of transportation based on fatalities per passenger mile. Hundreds of people die every year in crashes on New Year's Day, Thanksgiving Day and Christmas Day, according to Injury Facts. Alcohol impairment is involved in about a third of these fatalities.

Stay safe on the roads over the holidays – and every day:

- Prepare your car for winter and keep an emergency kit with you.
- Get a good night's sleep before departing and avoid drowsy driving.
- Leave early, planning ahead for heavy traffic.
- Make sure every person in the vehicle is properly buckled up no matter how long or short the distance traveled.
- Put that cell phone away; many distractions occur while driving, but cell phones are the main culprit.
- Practice defensive driving.
- Designate a sober driver to ensure guests make it home safely after a holiday party; alcohol or over-the-counter, prescription and illegal drugs can cause impairment.

### Decorate Safely

Decorating is one of the best ways to get in a holiday mood, but emergency departments see thousands of injuries involving holiday decorating every season.

When decorating follow these tips from the U.S. Consumer Product Safety Commission:

- Keep potentially poisonous plants – mistletoe, holly berries, Jerusalem cherry and amaryllis – away from children.
- If using an artificial tree, check that it is labeled “fire resistant.”
- If using a live tree, cut off about two inches of the trunk to

expose fresh wood for better water absorption, remember to water it, and remove it from your home when it is dry.

- Place your tree at least three feet away from fireplaces, radiators and other heat sources, making certain not to block doorways.
- Avoid placing breakable ornaments or ones with small, detachable parts on lower tree branches where small children can reach them.
- Only use indoor lights indoors and outdoor lights outdoors, and choose the right ladder for the task when hanging lights.
- Replace light sets that have broken or cracked sockets, frayed or bare wires or loose connections.
- Follow the package directions on the number of light sets that can be plugged into one socket.
- Never nail, tack or stress wiring when hanging lights, and keep plugs off the ground away from puddles and snow.
- Turn off all lights and decorations when you go to bed or leave the house.

Source: National Safety Council



**“Don’t Spill Water on Electronics...  
It Could Start a FIRE!”**

### Bethany Langworthy, Age 9

Bethany Langworthy warns readers to be careful with water around electronics. Thank you for your picture, Bethany! Bethany's parents are Kristina and Edward Langworthy, members of West River Electric.

Kids, send your drawing with an electrical safety tip to your local electric cooperative (address found on Page 3). If your poster is published, you'll receive a prize. All entries must include your name, age, mailing address and the names of your parents. Colored drawings are encouraged.



# Family FAVORITES

## CREAM CHEESE AND CUCUMBER SPREAD DIP

### Ingredients:

1 large cucumber, grated  
1 tsp. onion, grated  
8 oz. pkg. cream cheese  
3/4-1 cup mayonnaise  
Salt and pepper to taste

### Method

Grate cucumber and onion on several thicknesses of paper towels, squeeze out all the water. Place in a bowl. Blend other ingredients, adding enough mayonnaise to make it a spreading consistency. Serve with crackers or chips.

Mary Ann Klarenbeek  
Harrisburg, S.D.

## GRANDMA GRACE'S FROZEN FRUIT SALAD

### Ingredients:

8 oz. Cool Whip  
1 tbsp. lemon juice  
1 cup sour cream  
3/4 cup sugar  
Dash of salt

*Mix all thoroughly until  
sugar is dissolved.*

9 oz. can pineapple, crushed  
and drained  
Small jar maraschino cherries  
(halve or chopped if desired)  
2 sliced bananas (halve or  
quarter slices if desired)  
1/4 cup chopped walnuts

### Method

Mix thoroughly. Pour into 8x8 or 9x9 container. Cover and freeze. Thaw 10-15 minutes to allow cutting into serving portions.

My mother, Grace Alley, first made this salad for holiday meals. It has become a family favorite, and we always have it for one of our holidays.

Mary Harris  
Glad Valley, S.D.

## LEMON ROSEMARY GLAZED HAM

### Ingredients:

1 bone-in spiral-cut ham,  
about 10 lbs.  
1 1/4 cups honey, divided  
2 tsp. lemon extract  
1 1/4 tsp. whole rosemary  
leaves, crushed, divided

### Method

Preheat oven to 325°F. Place the ham on its side in roasting pan. Mix 1 cup of the honey, 1 1/2 tsp. of the extract and 1 tsp. of the rosemary in small bowl until well blended. Brush 1/2 of the honey mixture over ham, gently separating the slices so mixture can reach middle of ham. Cover loosely with foil.

Bake 1 hour, basting occasionally with pan drippings. Remove foil. Brush with remaining honey mixture. Bake 45 minutes longer.

Meanwhile, mix remaining 1/4 cup honey, 1/2 tsp. extract and 1/4 tsp. rosemary in small bowl. Serve with ham along with the pan drippings.

**McCormick.com**

Please send your favorite recipes to your local electric cooperative (address found on Page 3). Each recipe printed will be entered into a drawing for a prize in December 2024. All entries must include your name, mailing address, phone number and cooperative name.

# Understanding The Demand and Purchasing Of Your Electricity



**Chris Larson,**  
**General Manager**

You may not think you need to have an understanding of energy demand and purchasing, but do you ever look at your energy bill and wonder what it all means? If your answer to that question is “yes,” then you might be interested to learn how demand impacts your utility bill.

To start, it is important to understand how electricity is made and how it is delivered to your home.

Before Clay-Union can send electricity to your home, that electricity needs to be generated by a Generation and Transmission cooperative (G&T or East River Electric). Once the electricity has been generated, it travels over high-voltage transmission lines to substations, where the voltage is reduced to a safer level. The electricity then travels over distribution power lines and finds its way into your home or business. So, while you pay your bill to us – your electric distribution cooperative – we don’t actually generate the electricity you use. That is the job of the G&T.

We do help to determine how much electricity our members need to power their homes and businesses, and you play a big part in determining how much electricity the G&T needs to create in order to keep the lights on in our community. That is where these terms “consumption” and “demand” come in.

Consumption is measured in kilowatt hours (kWh). Demand is measured in kilowatts (kW). A lightbulb “consumes” a

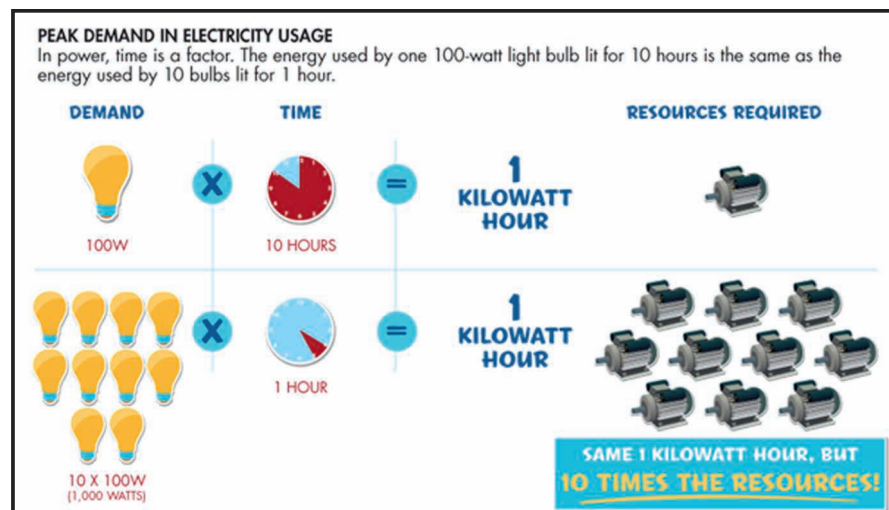
certain number of watts, let’s say 100 watts per hour. If that lightbulb stays on for 10 hours, it “demands” a certain number of kilowatts (in this case, 1 kW) from the generation station producing electricity. Now, if you turn on 10, 100-watt lightbulbs in your home for one hour, you are still consuming the same number of kW. However, you are placing a demand on the utility to have those kW available to you over the course of one hour, instead of ten. This requires the generation and transmission plant to produce more power in less time in order to meet your demand. Think about it like your internet service. When one person streams a movie or television show on a device in your home, the stream works perfectly. But as additional people in your home attempt to stream video at the same time, more bandwidth is needed.

**Peak demand refers to the time of day when the demand for electricity is highest.**

Certain appliances – such as HVAC units, electric ovens, water heaters and clothes dryers – demand significant power from the grid. That’s why not running them at the same time is important to minimize the Demand Charge.

Clay-Union purchases kilowatt hours from the G&T based on the average demand of our members. Peak demand refers to the time of day when the demand for electricity is highest. This is typically during the evening when families return home from work or school, cook dinner and use appliances the most. Using electricity during this peak demand period often costs more to both Clay-Union and to our members.

Generating and distributing power can be a tricky and complicated business, but rest assured Clay-Union will always meet the necessary demand to provide safe and reliable electricity to your family.



This graphic illustrates this concept, and why managing demand has a positive effect on the power grid.

**Thank you again, for allowing us to provide your electric service needs.**

**Chris Larson**  
**General Manager**  
clarson@clayunionelectric.coop

## Clay-Union Electric Board of Director Nomination Petitions Available for Districts #4 & #5

Jackie Williams

jwilliams@clayunionelectric.coop

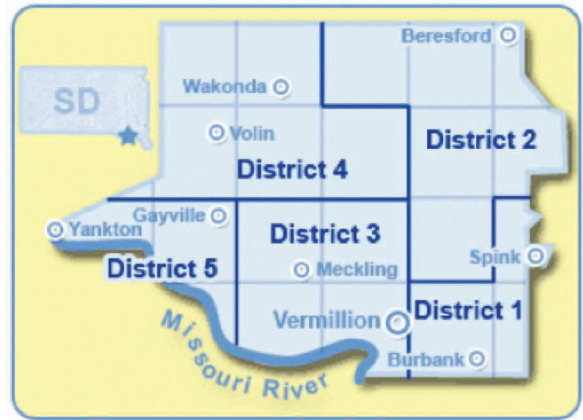
Pursuant to Section 7, Article 3 of the By-Laws of Clay-Union Electric, as amended by the members March 27, 2012, nominations for the Board of Directors of Clay-Union Electric are accomplished by petition.

Director Nomination Petitions are available for the nomination of a member in good standing with Clay-Union Electric from District #4 & District #5. Petitions are available at the cooperative office and can be picked up by the person pursuing the position. Clay-Union Electric, 31321 SD Hwy. 19, Vermillion, SD. Office hours: Monday through Friday, 7:30 a.m. until 4:00 p.m. Phone: 1-605-624-2673 or 1-800-696-2832.

The completed petitions must be returned to Clay-Union Electric no later than 4 p.m. Friday, February 7th, 2025 or postmarked no later than February 7th, 2025.

**DISTRICT 4:** The territory served by Clay-Union Electric beginning at a point on the Northeast corner of the territory at the junction of 458th Ave. and 297th St.; thence south on 458th Ave. to the intersection with 303rd St.; thence east on 303rd St. to the intersection with 464th Ave.; thence south on 464th Ave. to the intersection with 309th St.; thence west on 309th St. to the intersection with 446th Ave.; thence north on 446th Ave. to 297th St.; thence west on 297th St. to the intersection with 458th Ave., the point of beginning.

**DISTRICT 5:** The territory served by Clay-Union Electric beginning



### Clay-Union Electric Board of Director Districts

at a point on the Northeast corner of the territory at the junction of 452nd Ave. and 309th St.; thence south on 452nd Ave. to where a projection of 452nd Ave. meets the Missouri River; thence west along the South Dakota boundary of the Missouri River to a point that would be a projection south of 440th Ave.; thence north on 440th Ave. to the intersection with 308th St.; thence east on 308th St. to the intersection with 446th Ave.; the south on 446th Ave. to the intersection with 309th St.; thence east on 309th St. to the intersection with 452nd Ave., the point of beginning.



## BASIN ELECTRIC AND CLAY-UNION TO AWARD \$2000 IN SCHOLARSHIPS

Each year Basin Electric awards a \$1000 scholarship to a Clay-Union Electric member with the runner up receiving a \$500 scholarship from Clay-Union Electric.

The selection procedure is handled by a committee and the candidates must provide information regarding ACT and

SAT ratings, GPA and extracurricular school and community activities. The applicant must be a student who is enrolled or planning to enroll in a full-time graduate or undergraduate course of study at an accredited, two or four year college, university or vocational/technical school and the parent or guardian must be a member of Clay-Union Electric

**Applications can be found at <https://clayunionelectric.coop/scholarship-opportunities>. Applications must be received by Monday, February 3, 2025.**

Please mail to: Clay-Union Electric, PO

Box 317, Vermillion, SD, 57069 or can be dropped off no later than the date specified at 31321 SD Hwy. 19, Vermillion, SD 57069. Or emailed to Jackie Williams at: jwilliams@clayunionelectric.coop.

In addition to the Basin Scholarship, Clay-Union Electric awards a \$500 random drawing scholarship each year at our Annual Meeting to be held April 8, 2025 at the Gayville-Volin School Auditorium.

For complete details for all scholarships visit: <https://clayunionelectric.coop/scholarship-opportunities>





# HURRICANE AID

## Linemen Help Restore Power After Hurricane Helene

**Jacob Boyko**

[jacob.boyko@sdrea.coop](mailto:jacob.boyko@sdrea.coop)

Linemen from five of South Dakota's rural electric cooperatives traveled to the Southeastern U.S. in October to help restore power along Hurricane Helene's path of destruction.

The 18 linemen left Oct. 2 for Pickens, South Carolina, where Blue Ridge Electric Cooperative faced over 64,000 meter outages and more than 800 broken poles in Helene's aftermath.

Zach Hansen, a lineman from West River Electric Association, didn't think twice before he volunteered to go along.

"It's just the co-op way," he said. "There are people in need down there who lost their houses – lost their lives – and this is something we know we can do to help. It's kind of a once-in-a-lifetime opportunity."

The linemen stayed at a crowded base camp with dozens of other utility workers from all across the country. They slept on cots in a large, open army-sized tent, but with their busy schedules, they didn't spend

much time there anyway. Most days, the linemen woke at 5:30 a.m. for breakfast and worked in the field until supper at 8 p.m.

The work also presented unfamiliar challenges for the linemen; each time the crew needed to repair damaged infrastructure, they'd first have to start the labor-intensive process of clearing through debris and trees toppled by Helene's heavy wind gusts.

"When we have blizzards and ice storms in South Dakota, it's hard work – and you're trying to stay warm," Hansen explained. "But out here, there's a lot more chainsaw work and fixing wire breaks. It's not just straight miles of line lying down like we're used to at home."

By Oct. 9, fewer than 1,000 meters in Blue Ridge Electric territory remained offline, and the South







Dakota crews were dismissed to begin the 1,200-plus mile journey home.

But as the South Dakota convoy – which included bucket trucks, skid steers and ATVs – moved north, another call came in.

Jefferson Energy Cooperative in Wrens, Georgia, also faced catastrophic damage to their distribution lines, with 100% of their service territory without power after the storm. On Oct. 9, as South Dakota's linemen were driving home from South Carolina to reunite with their families, still over 10,000 homes and businesses remained without power.

Just like before, South Dakota's rural electric cooperatives answered the call.

"When our line superintendent called me that morning and asked me how we felt about going to Georgia, I said, 'well, we're right here, so we might as well go in and help,'" Bon Homme Yankton lineman Gunnar Dally said. "If they need help, we're more than willing to come."

The stop in Wrens delayed the linemen's return home by about a week, but the appreciation from the communities helped keep spirits high.

"When we were on breaks, there were people stopping to thank us for helping," Dally said. "A lot of them were very surprised when we said we were from South Dakota."

Hansen recognized another subset

of heroes: the families.

"The unsung heroes of storm jobs are the people we leave behind," he said. "My wife is at home with six kids taking care of the ranch while I'm gone. If we didn't have those people, we couldn't go out and do the things we needed to do. They are the real heroes."

SDREA General Manager Steve Barnett thanked the linemen for volunteering to help with the storm restoration efforts and for embodying

the values of South Dakota's rural electric cooperatives.

"These 18 linemen gave up time at home with their families to help people in need they've never met in a place they've never been," Barnett said. "Their selfless actions reflect what we stand for as a family of cooperatives, as South Dakotans, and as fellow Americans. We thank them for their work, their spirit and their dedication to keeping the lights on – at home, and in South Carolina and Georgia."





www.freepik.com

# MEMBERS UNKNOWN FORWARDING ADDRESS

**When you became a member of Clay-Union Electric you became part of the cooperative. Other utilities return profits to stock-holders and investors, your cooperative return capital credits to the members, THAT'S YOU!**

Unfortunately we do not have updated addresses for the following past members, and are asking current members for their help. If you know of someone on this list please let them know to call us at 605-624-2673.

*The checks were issued in November of 2023 and represent capital credits allocated for the years 1992 and 1993. In some cases you may be required to show proof of identity or proof of beneficiary of an estate. (M-Z will be printed in the next edition or you can find the complete list at <https://clayunionelectric.coop/capital-credits>).*

ALBEE, JAMES	BERBERICH, JOE	CARLIN, JOHN/MARJORIE	DEURMIER, JAMES
ALBERTSON, ROBERT	BERESFORD COOP	CARLSON, DOUG	DEVINE, JIM/JOAN
ALLEN, JIM/FRENCH, CLAUDIA	BERG, JAMES	CARLSON, ELMER	DILGER, FRANCIS J
AMUNDSON, GERALD E.	BERTELSEN, HARVEY	CARLSON, ROY R	DION, SHANNON
AMUNDSON, VIOLET V	BILLY, KARLA	CARLSON, STEVE	DIRKS, HAROLD C
ANDERSEN, DUANE	BISHOP, PHILIP C.	CAYCE, RICHARD	DONAHOE, BRIAN/JUDITH
ANDERSON, CHARLES	BIXLER, ART	CENTURY 21	DONAHOE, DAMIAN
ANDERSON, CLARENCE E	BIXLER, PAUL L	CHICK, LARRY	DONNELLY, CHUCK
ANDERSON, ELTON	BLACHNIK, DUANE	CHITWOOD, TERRY/DEBRA	DONOVAN, SANDY
ANDERSON, JEREMY	BOCK, MICHAEL	CHRISTENSEN BROADCAST GROUP	DOSE, ETHELYN L
ANDERSON, MARK	BOETTCHER, SHARON	CHRISTENSEN, LISA	DOTY, GARY/ALICE
ANDREWS, ROBERT	BOOTH, MELVIN	CHRISTENSON, ALICE	DRAKE, JERRY N.
ANGEL, JO ANN	BOULDEN, LEE/FRANCES	CHRISTENSON, GARY	DRAPER, PERRY
ANGLIN, DAVE	BOULLION, ROB	CISAR, RICHARD W	DRINGMAN, DANIEL
APEX DISTRIBUTING	BOUSKA, SHIRLEY	CLABAUGH, DENISE	DUIN, DENNIS
ARMSTRONG, DAVID	BOWLING, MARYANNE	CLAPPER, JEFFREY/GOODHOPE, SAM	DUNCAN, LOWELL
ARTZ, PAUL	BOYD, FLORENCE	CLYDE, DON	DUNHAM, JANICE
ATKINSON, BRYAN/JOSIE	BRANDT, DAVE	COIL, DWIGHT M	DUNHAM, LARRY
AUNE, ARLETTA	BRICKMAN, BRYAN	COLLAMER, ANN	DUNHAM, RANDY
AUSTIN, RANDY	BRITT, ROBERT D	COLLINS, GERALD	DUNKELBERGER, DALE/PAULA
BABB, EVELYN M	BROEN, JAMES	COMM NET CELLULAR INC.	DUPRE, EUGENE F/DEBRA
BAHM, CARMEN	BROUILLETTE, PETER	(ACCT P)	DURRIN, CAROL
BAILEY, BRUCE	BROWER CONST CO	COOK, DENNIS	DVORAK, DANIEL/DIANE
BAILEY, DALE	BROWN, DONNA	COOK, KENNETH MRS	DWYER, TONIA/REISZ, DEXTER
BAKER, CHARLES	BROWN, JAMES	COOK, WESLEY MR & MRS	DYKSTRA, TIM
BAKER, RACHEL	BROWN, KENNETH	COOKE, DALE	EACHEN, KIM
BAKER, TAMI	BROWN, MAX	COPENHAVER, BRUCE	ECKERT, KARL
BARKOSKY, BEVERLY	BROWNFIELD, MARGI	CRESWELL, DAVID M	ECKHOLT, LORI
BARNHART, GEORGE	BROZIK, LOUIS	CRISSEY, GERALD/MISTY	EHRlich, ALBERT A
BARTIKOWSKY, RON/NORMA	BRUYER, VIOLA E	DAHL, BLANCHE	ELKJER, JACK
BATSTONE-CUNNINGHAM, RON/ELIZ	BRYLINSKY, JODY	DAHL, GENE	ELLIS AUTO PARTS
BAUER, TERI	BUCHANAN, PEGGY	DAKOTA COOP TELEPHONE CO	ELLIS, PATRICIA
BAULER, CHARLES	BUCKMAN, DEB	DAKOTA FERTILIZER CO INC	ENGBRECHT, ELMER
BEAVERS, WILLIAM	BURKS, LAURIE	DANIELS, DEAN/DONNA	ENGEN, OLIN
BECKER, DONOVAN J	BUSDICKER, LAURA	DAVIDS, MARK/LYNETTE	ENGSTROM, LEROY
BEHNKE, DALE	BUTTS, DAVID	DAVIS, BETRECE R	ENGSTROM, ROYCE
BELFIE, ALBERT	BYRKELAND, JERRY	DEAN, BRUCE	ENNEN, MARK
BENDERT, RICHARD R	CACEK, ELVIN	DELFS, WILLIAM	ERICKSON, JERRY
BENNETT, DIANE	CACEK, WILLIAM/ROSE	DERYKE, CRAIG	ERICKSON, JOSEPH



EUTSLER, RANDY/LISA	HALL, ELSIE	HOLLAND, DWAYNE	KING FAMILY PARTNERSHIP
EVERSON, ROYAL	HALL, KERMIT/WILMA	HOLMSTROM, TOM	KING, RONALD G
EWALT, RONALD	HALL, PHILLIP	HOME TRUST SAVINGS & LOAN	KINNEY, GLADYS
F C I	HALSETH, RICK	HOOVER, HERBERT T	KIRTON, SCOTT
FAGERHAUG, CLAIR	HALVERSON, K./JODI CHRISTIAN	HORTON, CHIP	KLEINSCHMIT, MELISSA
FAMILY ENTERTAINMENT NTV	HALVORSON, KEITH	HOST ENGLUND, ELSE	KLINETOBE, MARY
FARMERS HOME ADMIN.	HANSBERRY, STEVE	HOTZ, TIM/CHRYL	KNIGHT, LISA
FARMER'S NATIONAL CO AGENT	HANSEN, CARL M	HOWARD, DELVIN	KNUTSON, RONALD
FARMERS UNION COOP ASSN	HANSEN, JOHN/LISA	HUD CONTRACTING OFFICE	KNUTSON, ROXANNE M
FEIMER, STEVEN	HANSEN, LOREN/LISA	HULL, MICHAEL P	KNUTSON, TIM
FIRST CHOICE REAL ESTATE, INC	HANSEN, RAYMOND	ISAACSON, MIKE	KOLBERG, ROBERT E
FISCHBACH, BRUCE	HANSEN, ROBERT	ISBURG, DEAN	KOLDA, BEN
FISHER(VIELMETTE), TERESA	HANSEN, RODNEY	IVERSON, SANNA	KOLLARS, MARY
FLETCHER, BRAD	HANSEN, RUTH	JACKSON, DON	KOMENT, ROGER W
FOKKEN, STEPHEN	HANSEN, VIRGIL/VIOLET	JACOBS, LAURA	KRAMER, CHRIS
FOLEY, LE ANN	HANSON, ANN	JANSEVICS, ELMAR	KRATZ, PHILLIP/PAMELA
FORMO, ROBERT	HANSON, DAVID/LA STELLA	JENSEN, DARRELL	KRINGLE, LEO/SUSAN
FORSTER, HARLAN	HANSON, JANE	JENSEN, LARRY	KRUEGER, MIKE
FOX, ALFRED	HANSON, JOYCE	JENSEN, MIKE	KRUMVIEDA, DARLA
FOX, EVELENA	HAPPY JACK'S SUPPER CLUB	JENSEN, NORMAN	KUPER, CLINT
FOX, KEN	HARBOURT, CHARLES	JEPSEN, EUGENE	KYTE, FRANCIS
FOX, TIMOTHY L.	HARBOURT, DEB	JOHNSON, DARRELL	LAMBERT, RICHARD
FROSCH, MELANIE	HARDING, PATRICK	JOHNSON, DON A	LAMBERT, STEVE
FUCHS, PAUL	HARNOIS, JODY	JOHNSON, EDWARD P	LAMMERS, DANIEL
GAPP, ELDON	HARRIS, BETSEY	JOHNSON, EDWARD V	LAMOREAUX, JOSEPH
GARDNER, TERRY	HARRIS, TAMI	JOHNSON, GERALD D	LAMOREUX, JAMES
GARFIELD TWP HALL	HART, ANDREW	JOHNSON, GREGORY V	LANDEEN, GLEN V
GARY'S REPAIR	HARTMAN, DAWNE J	JOHNSON, HOWARD R	LANG, BARB
GENZLINGER, GARRY	HARTS, WORTHY/MARIE	JOHNSON, JERRY	LANGFORD, BERT
GILBERT, TIMOTHY	HARVEY, LARRY	JOHNSON, LOREN/JULIE	LANGTON, ROBERT
GILBERTSON, MILDRED	HARWARD, BOB	JOHNSON, MARK/MICHELLE	LARSEN, ELDON/MARGARET
GIRARD, BRAD	HAYES, JAMES M	JOHNSON, MERTON	LARSON, DOUG
GLANZER, TERRY	HAYS, BRYAN	JOHNSON, RAY	LARSON, KAREN
GOODTEACHER, EMIL	HEIDEBRECHT, JEFF	JOHNSON, RODNEY	LARSON, LEWIS
GOODWIN, CLAYTON	HEIMSTRA, NORMAN	JOHNSON, ROGER/STEWART, KITTY	LARSON, MILDRED
GOSE, MICHAEL	HEIN, MICHAEL	JOHNSON, ROSS	LEADER, AMY
GRAHAM, CRIS	HEINEMEYER, JEFFREY D	JOHNSON, STEVE	LEE, RAYMOND
GRANTHAM, TOM	HEIRIGS, JOHN	JONES, JAMES	LEIKVOLD, KATHLEEN
GRASS, DOUGLAS	HEIRIGS, LAURA	JONES, SUSAN	LEIN, KENT C
GRAVES, BRENT	HENDRICKS, VERNE S	KADDATZ, JAY	LETSCHKE, GARY
GRAVES, CHARLES	HENRY, RAMON	KAEBERLE, ALFRED	LEYDEN, JIM
GREEN, VINCENT	HENSON, BILLIE	KAFKA, SCOTT	LEYDEN, RICHARD/KATHY
GREENFIELD, R.E.	HEURUNG, MARGARET M	KAHLER, JOSEPHINE A	LIEN, DAVID J
GREY OWL, RUTH	HINRICHSSEN, CHUCK	KAISER, CLARISSA	LIGHT, CHARLES
GRIMBERG, ROY	HIRSCHMAN, RUSS/PAT	KARANTINOS, CHRIS	LIST, TRACY
GROVER, KEN	HITTLE, GERVAISE G.	KARLEY, LARRY	LITTAU, ANTON
GULLIKSON, T./CORWIN, WILLIAM	HOADLEY, MICHAEL	KASER, CLINTON	LONEMAN, RONALD/MICHELLE
GUNDERSON, CHRIS/NORI	HOESING, LINDA	KATE AND OPIES	LONG CROW, CORRINE
GUNDERSON, JOHN W.	HOFF, RAYMOND	KELLER CONST CO	LONSON, ROBERT
H & E FARMS, INC	HOFFMAN, JAMES JR	KELLER, JOHN	LOVELACE, JEFFREY
H B LEE CO.	HOFFMAN, JIM	KELLEY, DONALD	LOWTHER, BEV
HAALAND, LARRY	HOFFMAN, LINDA	KENNEDY, JAMES A	LUEDELS, DENIS/JANEEN
HACKETT, STEVEN	HOFFMAN, LORI	KERR, ROBERT	LUKEN, LINDA
HAFEMANN, WM/KRIS	HOJNACKE, ALAN	KERRY HOUSE	LUNDBERG, TODD
HAGEN, ALVIN	HOLLAND, DEBBIE	KILLEAS, KRIS L	LUNDGREN, LORI L.



# STAYING SAFE

First responders put out a fire near Belle Fourche.  
Photo submitted by Butte Electric Cooperative.

## Butte Electric Cooperative Connects With First Responders

**Frank Turner**

frank.turner@sdrea.coop

October marks First Responders Month, a time to honor the dedication and courage of those who rush toward danger to keep their communities safe. This fall, electric cooperatives across the country expressed their gratitude to these everyday heroes who are always prepared to protect lives and the essential infrastructure that supports local neighborhoods.

Day or night, regardless of the weather, first responders answer the call, whether it's battling a blaze or responding to a medical emergency. When it comes to keeping the community safe, their collaboration with local electric co-ops is key for both local residents and the first responders themselves. Together, they work to ensure that emergencies are managed quickly, effectively and, most importantly, safely.

In September, Butte Electric further strengthened its ties and

communications with local first responders following an eventful summer by hosting a series of safety demonstrations for emergency crews in Meade and Butte Counties and the U.S. Forest Service.

"Earlier this year we faced several incidents that resulted in exposed power lines near first responders," said Matt Sleep, chief executive officer of Butte Electric. "In one case, we had a situation west of Spearfish where strong winds brought down a billboard, exposing lines that sparked and started a fire."

Both Butte Electric and the local fire department responded to the emergency, de-energizing the lines and containing the small grass fire. In a separate incident, a driver suffered a medical emergency and crashed into an electrical pedestal. Although the driver died in the accident, the actions of first responders and the electric cooperative prevented further injuries. The incident, among others, prompted Butte Electric to take proactive steps in preparation for the next possible emergency.

"We wanted to both educate responders and build some rapport, so when they see a power line, they know who to call and that they are comfortable getting in contact with us," said Sleep.

Butte Electric employees organized and led a hands-on safety training using the South Dakota Rural Electric Association's high voltage demonstration trailer, a specialized tool





that highlights the very real dangers of electricity. During the session, linemen demonstrated how electricity can arc, or jump, from one connection to another, always seeking the easiest path to the ground.

The training is one that linemen across the state have facilitated, which includes a memorable demonstration involving a grapefruit to show how contact with electricity impacts organic material. On the outside, the grapefruit appears undamaged after contact with an electrified line but cutting it open reveals it's been cooked from the inside.

The training left an impression with Trevor Papenfuss, an assistant fire management fire officer who has served with the U.S. Forest Service in the Spearfish area for more than 30 years. Papenfuss was just one of roughly 30 U.S. Forest Service members who attended the demonstration.

"We deal with incidents involving electricity at least once a year, if not more," Papenfuss said. "Butte

Electric provided us with a lot of valuable information and a powerful demonstration. Seeing a grapefruit burn from the inside out makes a big impact and impression of just how dangerous live electricity can be. Several of our new wildland firefighters attended and they took away information that will stay with them for a long time."

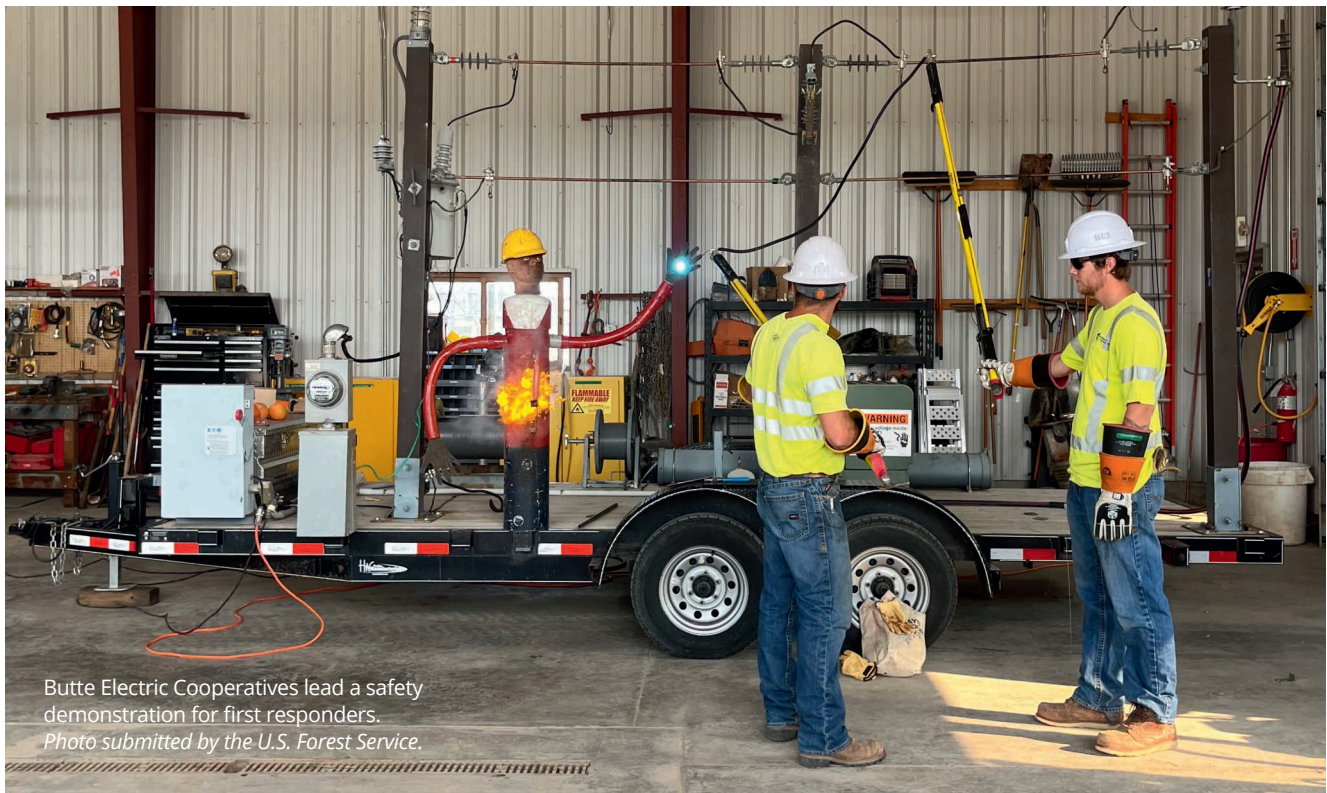
In a separate training tailored to the Sturgis Fire Department, Volunteer Fire Chief of the Sturgis Fire Department Scott Lensegrav said the training was impactful for his fellow volunteers. In addition to noting the value of the demonstration, Lensegrav highlighted the importance of maintaining a strong line of communication between electric service providers like Butte Electric and the fire department, especially during an emergency.

"In a situation involving power lines or electricity, the first thing we do is communicate with dispatch to try and figure out whose power line is involved in the emergency," said Lensegrav.

"The training was just another step in building good communication between our department and utilities. It was also great to have the refresher for our volunteers who have been with us for years and a good learning tool for the new volunteers that are coming into the service."

Looking forward, Sleep plans to continue strengthening the relationship between local first responders and Butte Electric for a safer future in their service area.

"It's all about building relationships and familiarity so that first responders know who to talk to and don't hesitate to call," said Sleep. "We deeply appreciate our first responders and want to help them however we can. These emergency personnel and volunteers are what make our communities great, and we just want to play our part in keeping them and our neighborhoods safe."



Butte Electric Cooperatives lead a safety demonstration for first responders.  
Photo submitted by the U.S. Forest Service.

# BOARD MEETING SUMMARY

---

## Clay-Union Electric Corporation Board Meeting Summary

SEPTEMBER 27, 2024 • VERMILLION, SOUTH DAKOTA

The board meeting was called to order on September 27, 2024, at 8:30 a.m. by board President Tom Larsen. The meeting was held in the conference room at the Clay-Union Electric Headquarters. In attendance were Tom Larsen, Chris Kinney, Jim Ryken, Mike Slattery. Director Sara Schulte joined the meeting at 10 a.m. Attending staff members included Chris Larson, Beth Bottolfson, Mike Kruse and Jackie Williams.

**Agenda (ACTION ITEM)** – A motion was made, seconded, and carried to approve the agenda with minor adjustments and the addition of appointing an Assistant Secretary and setting a 2025 Annual Meeting Date.

**Visitors to Be Heard** – None

**Approval of Minutes from the August Board Meeting (ACTION ITEM)** – A motion was made, seconded, and carried to approve the August board minutes held on 8/29/24.

**Approval of Minutes from the August Executive Session (ACTION ITEM)** – A motion was made, seconded, and carried to approve the August executive session held on 8/29/24.

**Check List & Electronic Funds Transfer** – The board reviewed the EFT/ACH payments, and the monthly check list as presented.

**New Members and Refunds (ACTION ITEM)** – A motion was made, seconded, and carried to approve new members, refunds and credit deposits as presented.

**Early Retirement of Capital Credits** – None

**Contracts** – None

**Policy Review** – The following Policies were presented to the board

A motion was made, seconded and carried to move Policy 715, Paid Time Off and Other Absences to the executive session as part of the compensation package discussion.

A motion was made, seconded and carried to approve changes to Policy 735, Cooperative Computers Electronic Devices and Cyber Security Program with an effective date of 10/1/2024.

A motion was made, seconded and carried to approve the new Policy 737, Cell Phone and Electronic Devices with an effective date of 10/1/2024.

**Work Order and Special Equipment Summary** – None

**RUS Loan (Action) - SD 0003 – AL45 Clay Resolutions** The board of directors took action as recommended by Attorney Nadolski to execute the necessary loan documents regarding the new RUS Loan.

### Management Reports:

**A. Manager's Report** - Manager Larson provided reports on the monthly activities:

**October Board Meeting** – The date of October 25, was set as the next regular board meeting to begin at 8:30 a.m.

**East River REED/MAC** – A brief video conference was held to update a resolution that was needed in support of a new grant/loan application.

**New Building** - Manager Larson reviewed with the Board various warranty and other happenings that are being worked through with Puetz and other contractors.

**East River Annual Meeting Delegate** - The East River Annual Meeting was held September 4, 2024, at the Best Western Ramkota Hotel in Sioux Falls.

**Cost of Service/Rates (ACTION ITEM)** – Management presented various reports including:

- An update to the previous Cost of Service Study
- Financial Forecast updates
- Historical Rate Data
- Power Increase Review
- Budget Estimates
- Rate Variations and Impacts to Members

The Board after a lengthy discussion agreed:

1. Increase on average residential rate of 10% or approximately \$15-\$20 per month increase.
2. Increase on average Small Commercial 3 Phase rate of 10% or \$10 per month.
3. Increase on average to large power rate of 8.5%.
4. Increase of 6% on average to the irrigation rate class.

**Joint Jurisdictional Zoning Area** - The City of Vermillion and Clay County are revising their JJZA agreement with a public meeting being held on September 30th to review the changes being proposed.

**SD Line Patrol** - Virtual meetings have started in planning the SD Line Patrol poker run scheduled for September 2025.

**Mid-West Annual Meeting** - The Mid-West Annual Meeting will be December 10-12 in Denver.

**NRECA Regional** – Minneapolis - The NRECA Regional meeting was held from September 16th to the 18th in Minneapolis, MN.

**Marketing/Communications Committee** - The quarterly meeting was held in Madison on September 12th.

**Assistant Secretary Appointment (Action)** – A motion was made, seconded, and approved to appoint Director Sara Schulte as the Assistant Secretary.

**2025 Annual Meeting Date (Action)** - A motion was made, seconded, and carried to set the date of April 8th with a storm date of April 15th for the 2025 Annual Meeting. It will be held at the Gayville-Volin School, Gayville, SD.

**Member Appreciation update** – 468 meals were purchased at the Clay County Fair for a total of \$2,340 that will be presented to the fair board.

**B. Administrative Report** – Manager of Finance and Administration Bottolfson reviewed the following reports with the board:

- Billing Activity
- Monthly Statements – Mail Delays



- August 2024 Financials Recap
- FEMA – June Flooding
- Capital Credit Retirements
- Patronage Capital in Associated Organizations
- Water Heater, Heat Pump & Irrigation Rebates

*All reports were posted to the website earlier for board review*

**C** **Operations Report** – Operations Manager Kruse reviewed the following reports with the board:

- Monthly department work summary
- Wiring Crew
- New Services
- Service Upgrades
- August Outage Report

*All reports were posted to the website earlier for board review.*

**Financial Report** – Manager of Finance and Administration Bottolfson reviewed the following reports with the board:

- Actual to Budget
- Balance Sheet
- Interest Income
- kWh Sales Report
- Large Power
- Line Loss
- Operating Statement
- Power Bill
- Summary of Purchased Power
- Wiring Income & Expense

*All reports were posted to the website earlier for board review.*

**Legal Report** – None

**Strategic Planning** – None

**Safety Meeting Minutes** – The September Safety Meeting Minutes were posted to the website for the board to review and were discussed during the meeting.

**Cyber Security** – The August Cyber Security report from East River IT was posted to the website for the board to review and was discussed during the meeting.

**Video and/or Meeting Reports** –

- East River Report
- East River Financials
- Basin Reports
- SDREA Reports

**Calendar** – The board reviewed the October 2024 calendar.

**Executive Session** – The board went into Executive Session at 2:40 p.m., Executive Session was adjourned at 3:46 p.m. There was no action taken.

**Wage and Compensation Plan (Action)** - A motion was made, seconded, and carried to approve the Total Compensation Package for all employees other than the General Manager as reviewed with Manager Larson by the Board of Directors.

A motion was made, seconded, and carried to approve compensation for the General Manager as determined by the Board of Directors.

**Adjournment** – There being no further business, a motion was made, seconded, and carried, to adjourn the meeting at 3:55 p.m.

Thomas Larsen, President

James Ryken, Secretary

## Office Hours and Due Dates

Our office hours are Monday – Friday, 7:30 a.m. to 4 p.m. Please remember your PAYMENT DUE DATE is the 20TH OF EACH MONTH. Your payment must ARRIVE in our office on the 20th to avoid any penalties. Please allow mailing time as we go by the received date, NOT the postmark. If the 20th falls on a weekend or holiday, payment is due the following business day. If payment is still not received within 10 days by 8 a.m., a \$25 collection fee will be applied and a final disconnect notice will be mailed. If disconnection for nonpayment occurs, all past and current energy charges, a reconnect fee and sufficient credit deposit will be required before the meter can be reinstalled.

### FOR YOUR CONVENIENCE, WE ALSO ACCEPT THESE PAYMENT OPTIONS.

**Bank Draft** – Have your payment automatically deducted from your checking or savings account. No fees apply for this service.

### Recurring Debit/Credit Card

– You may call in your credit/debit card payment and ask for recurring, it will then bill to that card every month on the 20th (or next business day) of each month until you call to cancel. No fees apply for this service.

**Pay by Phone** – You may call in your credit/debit card payment each month. No fees apply for this service.

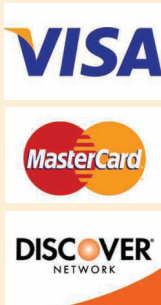
**By Mail** – Send check or money order with your payment slip. Please be sure to mail early so we receive it by the 20th, we do not go by postage date.

**In Office** – We accept cash, check and money order or we can take your credit/debit card in our office. No fees apply for this service.

**On Line Billing** – Pay your bill on line at [www.clayunionelectric.coop](http://www.clayunionelectric.coop) No fees apply for this service.

Collection Fee .....	\$25
Standard Reconnect Fee .....	\$50
Reconnect Fee for Non-Payment.....	\$100
After Hours Reconnect Fee.....	\$150
Insufficient Funds Check Fee .....	\$30

**Delinquent Accounts (gross rate)**  
**10 percent on the first \$200 plus 2 percent on the balance.**





**DEC. 7**  
**Santa at the Zoo**  
 10 a.m.-2 p.m.  
 Great Plains Zoo  
 Sioux Falls, SD  
 605-367-7003

To have your event listed on this page, send complete information, including date, event, place and contact to your local electric cooperative. Include your name, address and daytime telephone number. Information must be submitted at least eight weeks prior to your event. Please call ahead to confirm date, time and location of event.

**NOV. 29**  
**Parade of Lights**  
 Parade of Lights  
 7 p.m.  
 Chamberlain, SD

**NOV. 30**  
**A Hometown Christmas Market**  
 2 p.m.-6 p.m.  
 Main Street  
 Elk Point, SD

**NOV. 30**  
**Mid-Winter Fair**  
 9 a.m.-4 p.m.  
 Gregory Memorial Auditorium  
 Gregory, SD  
 605-830-9778

**NOV. 29-DEC. 29**  
**Trees & Trains Exhibit at SD State Railroad Museum**  
 Hill City, SD  
 605-665-3636

**DEC. 1**  
**A Christmas Carol**  
 2 p.m.  
 Gayville Music Hall  
 Gayville, SD  
 605-624-2859

**DEC. 5**  
**Christmas on the Prairie**  
 4 p.m.  
 Main Street  
 Miller, SD

**DEC. 5**  
**Holiday Festival of Lights**  
 4 p.m.-7:30 p.m.  
 Yankton, SD  
 605-665-3636

**DEC. 6**  
**Kimball's Hometown Holiday**  
 3:30-7 p.m.  
 Legion Hall  
 Kimball, SD

**DEC. 6**  
**Hometown Holiday Vendor Fair**  
 10 a.m.-6 p.m.  
 Armory  
 Howard, SD

**DEC. 7**  
**Newell Festival of Trees**  
 9 a.m. – Doors Open  
 11:30 a.m. – Community Lunch  
 4 p.m. – Auction  
 Newell City Hall  
 Newell, SD

**DEC. 6-8, 13-15**  
**A Sherlock Carol**  
 Dec. 6-7, 13-14, 7:30 p.m.  
 Dec. 8, 15, 2:30 p.m.  
 Corson, SD  
 mightycorson.com

**DEC. 7**  
**Santa Day**  
 2 p.m.  
 Stockholm Buggy Museum  
 Stockholm, SD  
 605-467-3940

**DEC. 7**  
**KJAM Parade of Lights**  
 5:30 p.m.  
 Madison, SD  
 605-256-4514

**DEC. 7-31**  
**Garden Glow at McCrory Gardens**  
 5 p.m.-9 p.m.  
 Brookings, SD  
 605-688-6707

**DEC. 8**  
**Aberdeen Community Concert Association Fund Raiser**  
**2024 Medora Magical Christmas Memories Tour**  
 3 p.m.  
 Aberdeen Civic Theater  
 Aberdeen, SD  
 605-228-0946  
 aberdeencommunityconcerts.com

**DEC. 14**  
**Parade of Lights**  
 Wessington, SD  
 605-359-2049

**DEC. 15**  
**A Poker Alice Christmas**  
 2 p.m.  
 Gayville Music Hall  
 Gayville, SD

**DEC. 31**  
**American Legion Post 15 Save the Last Dance 2024**  
 8 p.m.-12:30 a.m.  
 El Riad Shrine  
 Sioux Falls, SD  
 605-336-3470

**Note: Please make sure to call ahead to verify the event is still being held.**